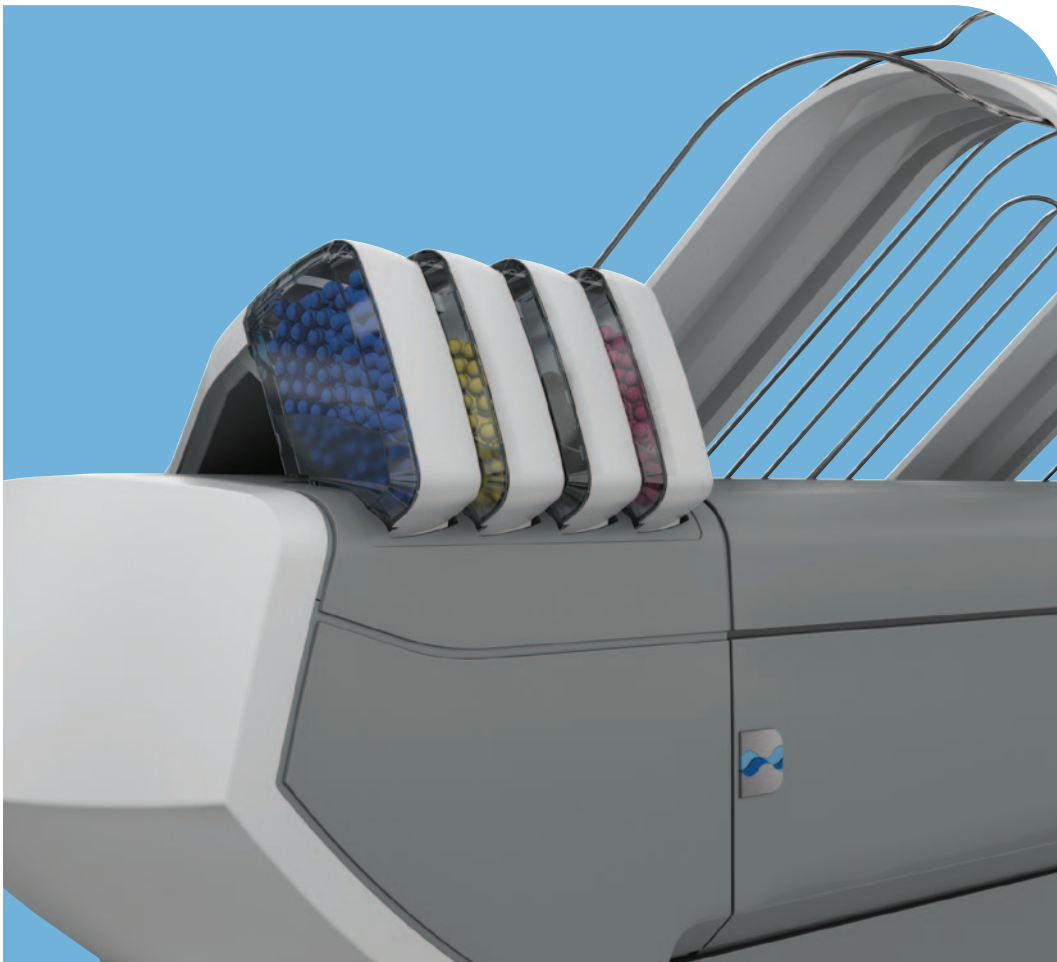




**Océ**

ColorWave 650  
printing system

Build a colorful  
world



**Canon**  
CANON GROUP

Large format black  
& white and color on  
one productive system

- All-around productivity
- Effortless operation
- Océ CrystalPoint technology quality
- Sustainability secure

# Build a colorful world



# Océ ColorWave 650 printing system

## Large format black & white and color on one productive system



Print, copy, and scan without sacrificing productivity or quality with the Océ ColorWave® 650 printing system. Now you can print superb quality — in black & white and color — on a single device using proven, award winning Océ CrystalPoint technology.

### The Next Wave in speed, efficiency, and flexibility

The Océ ColorWave 650 printing system builds on the proven success of its predecessor, the Océ ColorWave 600 printer. It has been enhanced with a number of improvements that offer the Next Wave in speed, efficiency and flexibility.



#### The Next Wave...

- **Speed:** prints up to 50% faster than its predecessor
- **Efficiency:** the use of copy and scan templates and the integrated online folder saves time on document tasks
- **Flexibility:** manage, print, and share documents at your desktop via your web browser

# Océ ColorWave 650 printing system

## All-around productivity

The Océ ColorWave 650 printing system can print in black & white and color at up to 210 D-size prints per hour for all-around productivity. It can hold up to six media rolls and prints come out dry, cut to size and ready to use. With the optional online folder, different folded packages can be prepared and printed right from your desktop.

## Effortless operation

The system simplifies routine tasks to save time and to ensure first-time-right output. Define up to five copy and scan templates with your most common settings. Then just press the green button and the system does the rest. Whether copying, scanning or printing, the system can be set-up to help you get the correct results at the touch of a button.

## Océ CrystalPoint technology quality

The patented Océ CrystalPoint technology helps ensure robust, waterfast prints with sharp lines, high readability of fine details and smooth, even area fills. The high-quality prints, which are consistent over time and on different machines, have a unique silk-shine look and feel, independent of the type of media you use.

## Sustainability secure

The unique Océ TonerPearls® toner make for a totally clean system: there's no fine dust, no odor and minimal waste disposal.



### 1 Océ TonerPearl cartridges

You can quickly and easily handle the Océ TonerPearls with almost no risk of getting residue on your hands or in the air.

### 2 Top delivery tray

The top delivery tray can hold up to 100 prints.

### 3 Color user panel

The user panel allows you to quickly scroll through the menus, to monitor the media and toner stock and to perform maintenance tasks correctly.

### 4 Imaging devices

The eight imaging devices, two per color, move across the media at high speed, jetting the toner gel onto the media. As a result, a crisp print quality is achieved.

### 5 Media

The 42-inch wide printer holds up to six media rolls, each containing up to 650 feet of media. Supports 2-inch or 3-inch cores.

Océ TC4 scanner  
(optional)



### **Superior scan technology**

- Optimal quality and reliability for monochrome and color scanning
- A single CCD camera ensures consistent image quality, even with transparencies or folded drawings

### **Ease of Use**

- Copy and scan templates for commonly performed actions

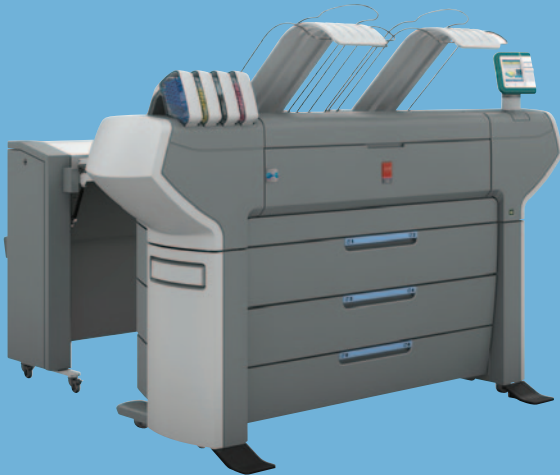
### **Consistent color scanning**

- Océ Color Image Logic® technology provides right-first-time results
- Automatic background compensation offers clean digital images even with demanding originals

### **Ideal productivity**

- Fast processing on the controller frees the scanner quickly
- True Concurrency — fully utilize the scanner for copying or scanning while printing is taking place

Océ ColorWave 650 printer + Océ 2400 fanfold



Océ ColorWave 650 printer + Océ 4311 fullfold



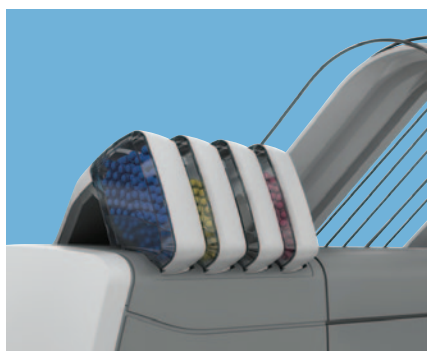
### **Convenient online folding**

With the fully integrated Océ 2400 fanfold (optional) you can immediately pick up your fanfolded color or monochrome drawings, even long plots. Fanfolding saves time and avoids creased drawings. Instead of maneuvering a set of large format documents you have well organized piles to work with. The narrow fold unit allows you to fanfold 4-inch panels, for efficient map production.

### **Productive online folding**

If you combine your Océ ColorWave 650 printing system with the Océ 4311 fullfold (optional), you can automatically fold wide format prints, ready to use. The crossfolded documents can easily be retrieved from the belt unit. In addition to the standard folding programs you can create your own programs, which increases your flexibility to respond to future demands. As an option, an extended stacker can be installed, allowing you to stack 150 additional folded E-size prints.



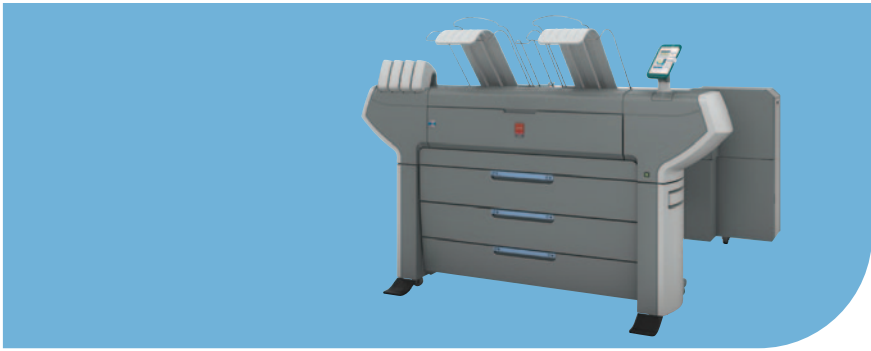


Technology
Description
Imaging technology
Toner
Speed
Resolution
General
Configuration
Size main engine (W x D x H)
Weight main engine
Certifications
Paper handling
Paper rolls
Maximum paper capacity
Paper weight
Roll width
Output delivery
Media type ( <a href="http://www.mediaguide.oce.com">www.mediaguide.oce.com</a> )
Controller
Description
Client operating system support
Processor
Memory
Hard disk
Interface
Page description language
Security
Options
Scanner
Description
Scan resolution
Scan speed
Scan format
Scan destination
Original width
Original length
Original thickness
Zoom
Preset modes
Size scanner (W x D x H)
Weight scanner

Large format black & white and color on one productive system
Océ CrystalPoint technology
Océ TonerPearls for CYMK, 500 grams per color
B&W: 1,459 sq. ft./hr.
Color: 1,361 sq. ft./hr.
600 dpi
Printer only or multifunctional
5.17' x 6.89' x 2.93'
430–606 lbs. (195–275 kg)
EPA ENERGY STAR®, TÜV GS, CETECOM, CE, UL, cUL, CB, FCC Class A
2–6 rolls
3,900 ft., 650 ft. on a roll (1200 m, 200 m per roll)
16–40 lb. bond (60–160 g/m²); up to 8 mil. specialty media
11"–42" (297–1067 mm)
Top delivery tray, 42-inch stacker, folder, take-up unit
Paper: Plain 75–90–120–160g (Bond), Recycled, Colored, Fluorescent, Blueback Specialties: Polyester film, Self-adhesive film/paper, Tyvek™, Roll up film, Soft banner, Vellum
Océ PowerM® Plus controller
Windows® 2000 / XP / Windows Vista® / 7 / Windows Server® 2003 / Windows Server® 2008, Terminal Server, Citrix® MetaFrame, Mac OS® 9 / Mac OS X® (Adobe® PostScript® 3™/PDF driver)
E8400 3.0 GHz Core 2 Duo
4 GB DDR2 DRAM
2 x 500 GB
10/100/1000 Base-T with RJ45
HP-GL, HP-GL/2, TIFF, JPEG, Adobe PostScript 3/PDF, CALS-I, NIRS, ASCII, CalComp, C4
E-shredding
Adobe Postscript 3 / PDF printing
Adobe fonts: Chinese Traditional / Chinese Simplified / Japanese / Korean
Océ TC4 scanner with Océ Direct Scan color technology (single camera, single mirror)
Optical 575 dpi, maximum 600 dpi
B/W: maximum 3.3"/sec. (5 m/min.)
Color: maximum 2.8"/sec. (4 m/min.)
TIFF, PDF, PDF/A, JPEG, CALS, multi-page PDF, multi-page PDF/A and multi-page TIFF
Network Directory, Smart Inbox
8"–40" (200–1016 mm)
8"–72" (200 mm–22 m)
Maximum 0.12" (3 mm)
With thick originals option: maximum 0.59" (15 mm)
10–1000 %
Lines & text, Map, Artwork, Photo, Grays & lines, Dark original, Blueprint
51.2" x 25.6" x 51.2" (130 x 65 x 130 cm)
154 lbs. (70 kg)



Océ 2400 fanfold	
Paper feed	Automatic or manual
Folding speed	Aligned to print speed
Paper width	8.5" – 36" (210 – 930 mm)
Paper length	8.5" – unlimited (210 mm – unlimited)
Paper weight	16 – 32 lb. (60 – 120 g/m <sup>2</sup> )
Folding programs	8 standard programs, custom programs: unlimited
Folding standards	DIN824, AFNOR, ANSI, US-sizes
Folded package width	4" – 16.5" (100 – 420 mm)
Binding edge	0 – 1.2" (0 – 30 mm)
Océ 4311 fanfold	
Paper feed	Automatic or manual
Folding speed	Aligned to print speed
Paper width	8.5" – 36" (210 – 930 mm)
Paper length	8.5" – 98.4" (210 – 2500 mm)
Paper weight	16 – 32 lb. (60 – 120 g/m <sup>2</sup> )
Folding programs	8 standard programs, custom programs: unlimited
Folding standards	DIN824, AFNOR, ANSI, US-sizes
Folded package width	7" – 16.5" (180 – 420 mm)
Folded package length	Maximum 59" (maximum 1500 mm) (20 lb.)
Binding edge	0 – 1.2" (0 – 30 mm)
Options	Extended stacker (for 150 extra folded E-size prints)
Environmental	
Sound power level	Sleep: less than 41 dB Ready: less than 53 dB Active: less than 67 dB
Ozone emissions	Zero
Power requirements	100 – 120 V, 200 – 240 V; 50/60 Hz
Power consumption	Off: less than 0.5 W Ready: 210 W Active: 360 W EPA ENERGY STAR sleep mode: 72 W total system (less than 1 W engine, 71 W DFE)
Workflow	
Description	Concurrent print, copy, scan, and file processing
Printer drivers	Microsoft® certified Windows® driver, Adobe PostScript 3 driver
Job submission	Océ Publisher Express, Océ Publisher Select™ software
Job management	Print and history queue, Smart inbox, Manage queue, Océ Express WebTools, Secure controller access
Accounting	Software module in Océ Express WebTools
Templates	Option: Océ Account Console
Options	5 copy templates, 5 scan templates
Hardware	Océ 2400 fanfold, Océ 4311 fullfold, Delivery belts, 42-inch stacker, take-up unit
Software	Océ Repro Desk® Studio, Océ Repro Desk Select, Océ Repro Desk Professional



Océ 2400 fanfold	
Paper feed	Automatic or manual
Folding speed	Aligned to print speed
Paper width	8.5" – 36" (210 – 930 mm)
Paper length	8.5" – unlimited (210 mm – unlimited)
Paper weight	16 – 32 lb. (60 – 120 g/m <sup>2</sup> )
Folding programs	8 standard programs, custom programs: unlimited
Folding standards	DIN824, AFNOR, ANSI, US-sizes
Folded package width	4" – 16.5" (100 – 420 mm)
Binding edge	0 – 1.2" (0 – 30 mm)
Océ 4311 fanfold	
Paper feed	Automatic or manual
Folding speed	Aligned to print speed
Paper width	8.5" – 36" (210 – 930 mm)
Paper length	8.5" – 98.4" (210 – 2500 mm)
Paper weight	16 – 32 lb. (60 – 120 g/m <sup>2</sup> )
Folding programs	8 standard programs, custom programs: unlimited
Folding standards	DIN824, AFNOR, ANSI, US-sizes
Folded package width	7" – 16.5" (180 – 420 mm)
Folded package length	Maximum 59" (maximum 1500 mm) (20 lb.)
Binding edge	0 – 1.2" (0 – 30 mm)
Options	Extended stacker (for 150 extra folded E-size prints)
Environmental	
Sound power level	Sleep: less than 41 dB Ready: less than 53 dB Active: less than 67 dB
Ozone emissions	Zero
Power requirements	100 – 120 V, 200 – 240 V; 50/60 Hz
Power consumption	Off: less than 0.5 W Ready: 210 W Active: 360 W EPA ENERGY STAR sleep mode: 72 W total system (less than 1 W engine, 71 W DFE)
Workflow	
Description	Concurrent print, copy, scan, and file processing
Printer drivers	Microsoft® certified Windows® driver, Adobe PostScript 3 driver
Job submission	Océ Publisher Express, Océ Publisher Select™ software
Job management	Print and history queue, Smart inbox, Manage queue, Océ Express WebTools, Secure controller access
Accounting	Software module in Océ Express WebTools
Templates	Option: Océ Account Console
Options	5 copy templates, 5 scan templates
Hardware	Océ 2400 fanfold, Océ 4311 fullfold, Delivery belts, 42-inch stacker, take-up unit
Software	Océ Repro Desk® Studio, Océ Repro Desk Select, Océ Repro Desk Professional

# Beyond the Ordinary

## Océ Environmental Certifications



**Mixed Sources**  
Product group from well-managed  
forests and other controlled sources  
www.fsc.org Cert no. SCS-COC-00856  
© 1996 Forest Stewardship Council



## Partners Certifications



**PRIORITY**  
ENGINEERING

Priority Engineering enables our customers to manage their documents efficiently and effectively by offering innovative print and document management products and services for professional environments and outsourcing solutions.

### Priority Engineering Indianapolis, IN

Mike Hesser

317-308-7409

[mhesser@priorityengineering.net](mailto:mhesser@priorityengineering.net)

### Fort Wayne, IN

Steve Musser

260-692-2365

[smusser@priorityengineering.net](mailto:smusser@priorityengineering.net)

### Evansville, IN

Clint Stewart

812-431-4337

[cstewart@priorityengineering.net](mailto:cstewart@priorityengineering.net)

### Louisville/Southern Indiana

Dan Newby

812-369-5776

[dnewby@priorityengineering.net](mailto:dnewby@priorityengineering.net)